

m

a

s

h

a

Platform Lift - EN









## MASHA PLATFORM LIFT

Masha platform lift is specially designed to facilitate the life of individuals with mobility restrictions.

With its modern design and structure, both for indoor and outdoor use, it offers access to wheelchair users, elderly and people with reduced mobility.

It provides a comfortable and safe journey thanks to its silent operation system, easy control panel to use and safety sensors.

**We overcome barriers together with Masha!**







## MASHA's ALUMINIUM RAIL SYSTEM

The aluminium rail of Masha platform lift is both a stylish and practical solution.

With its slim and modern design, it adapts to its environment and offers an aesthetic appearance.

Thanks to its modular structure, it can be easily transported and installed quickly.

Its solid material allows effortless use for many years.

Due to its anodized coating, it shows high resistance to corrosion and climate conditions.

It is ideal for outdoor use and provides long-lasting performance.





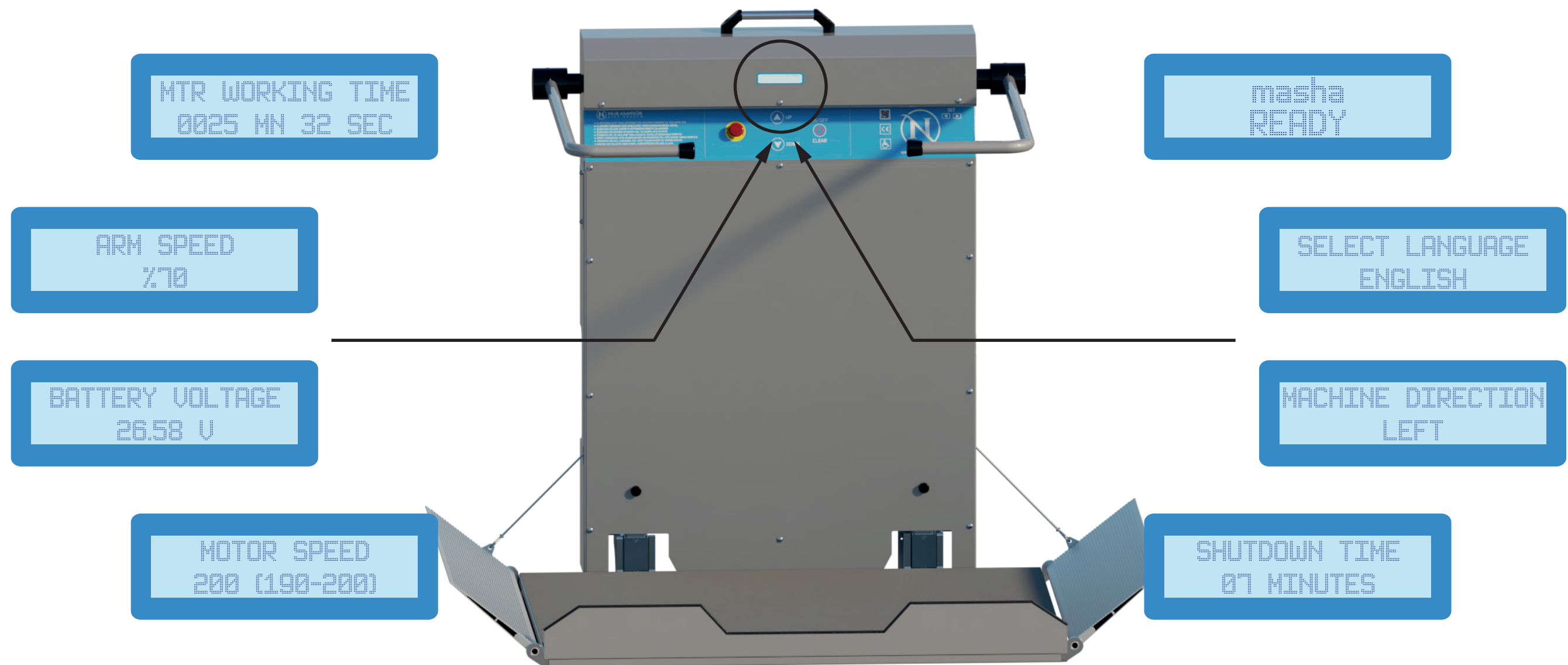
## CONTROL AT YOUR FINGERTIPS WITH ONE BUTTON

Masha platform lift offers easy and practical use with its ergonomically designed remote control.

The user can effortlessly call or drive the lift, allowing a full independent movement.







## SMART CONTROL - EASY TO USE

Masha platform lift provides instant information thanks to its user-friendly digital display.

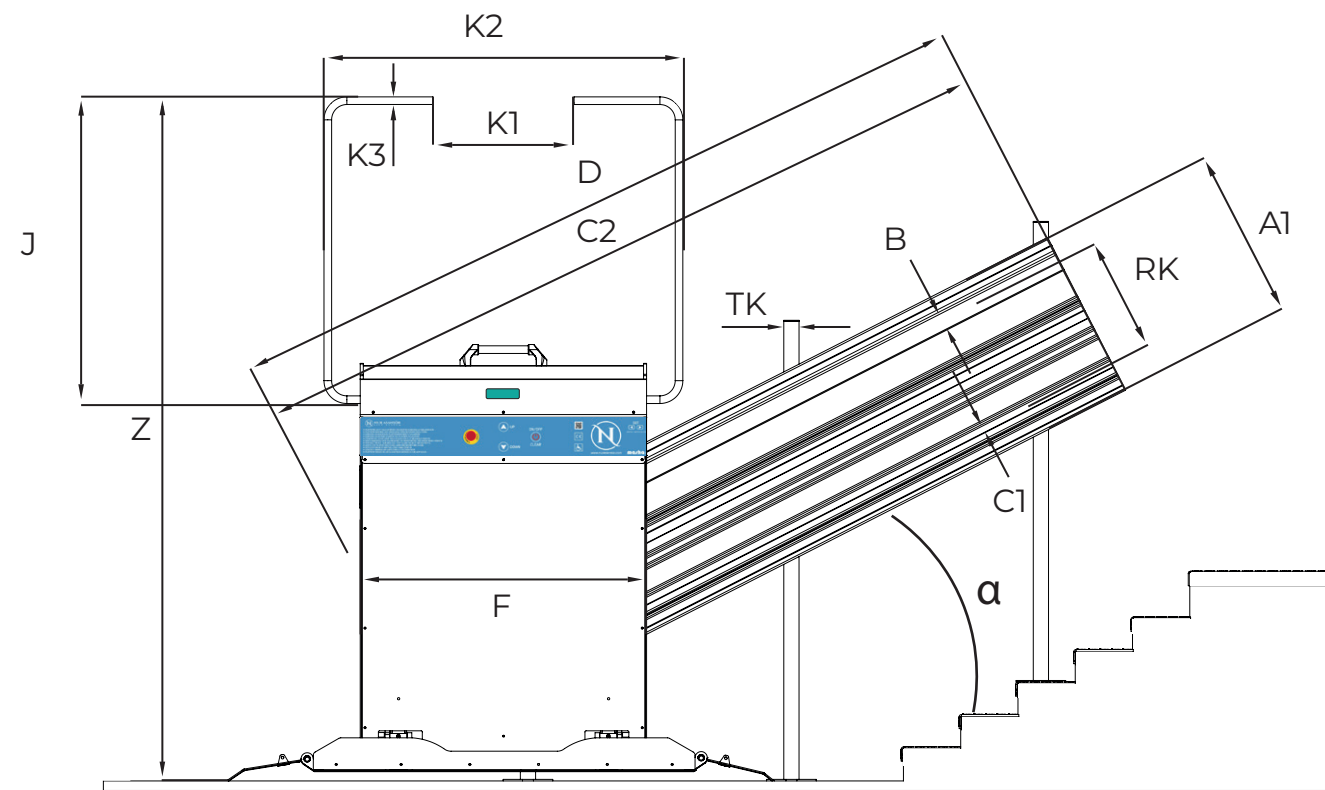
It allows easy adjustment of basic settings such as language selection and speed.

With its clear interface and menus, it is practical and safe for both users and technicians.

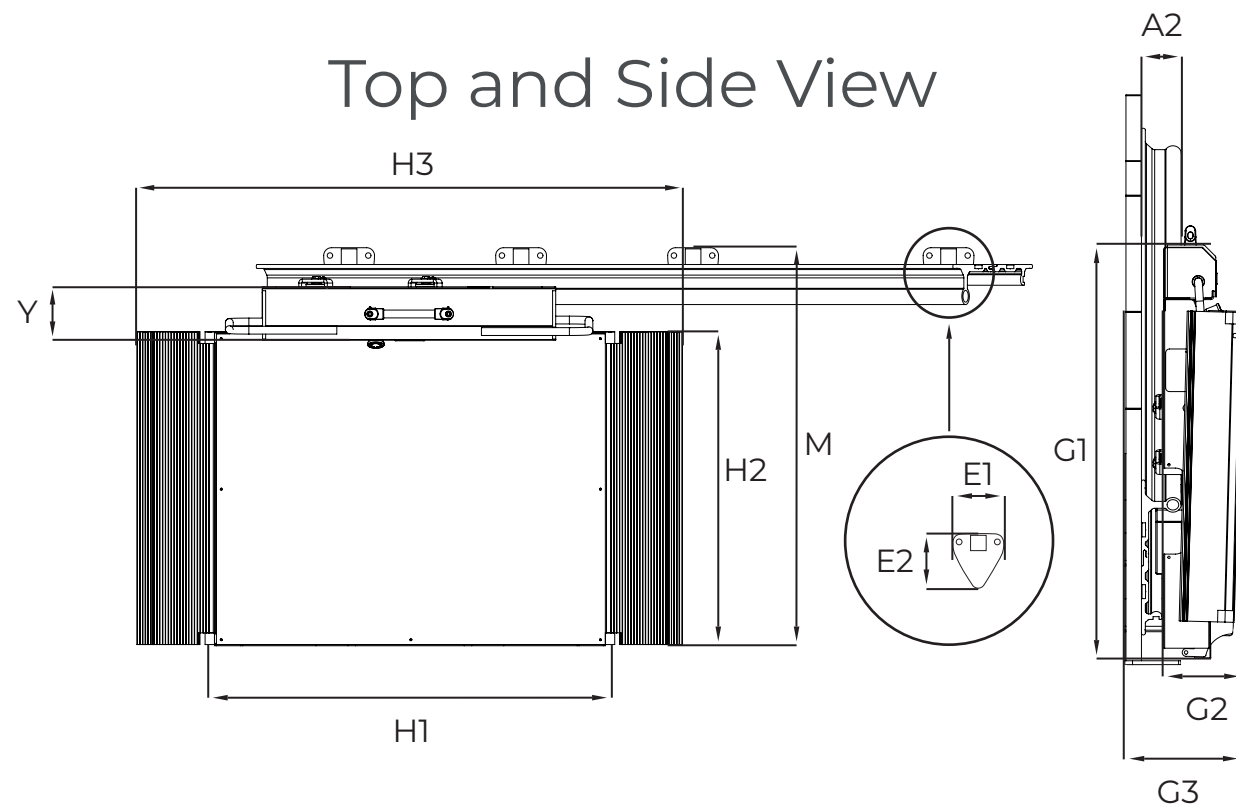


## FLOOR MOUNTING

Front View

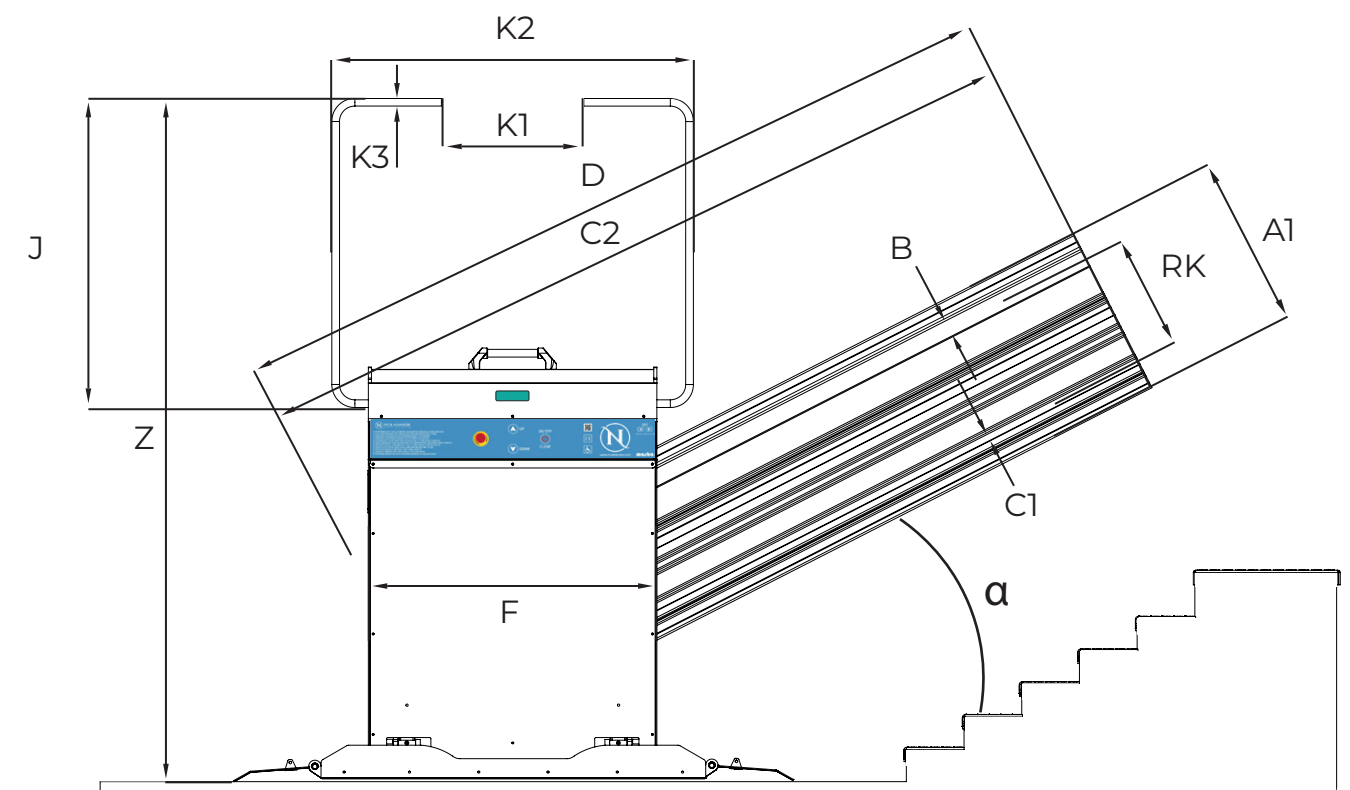


Top and Side View

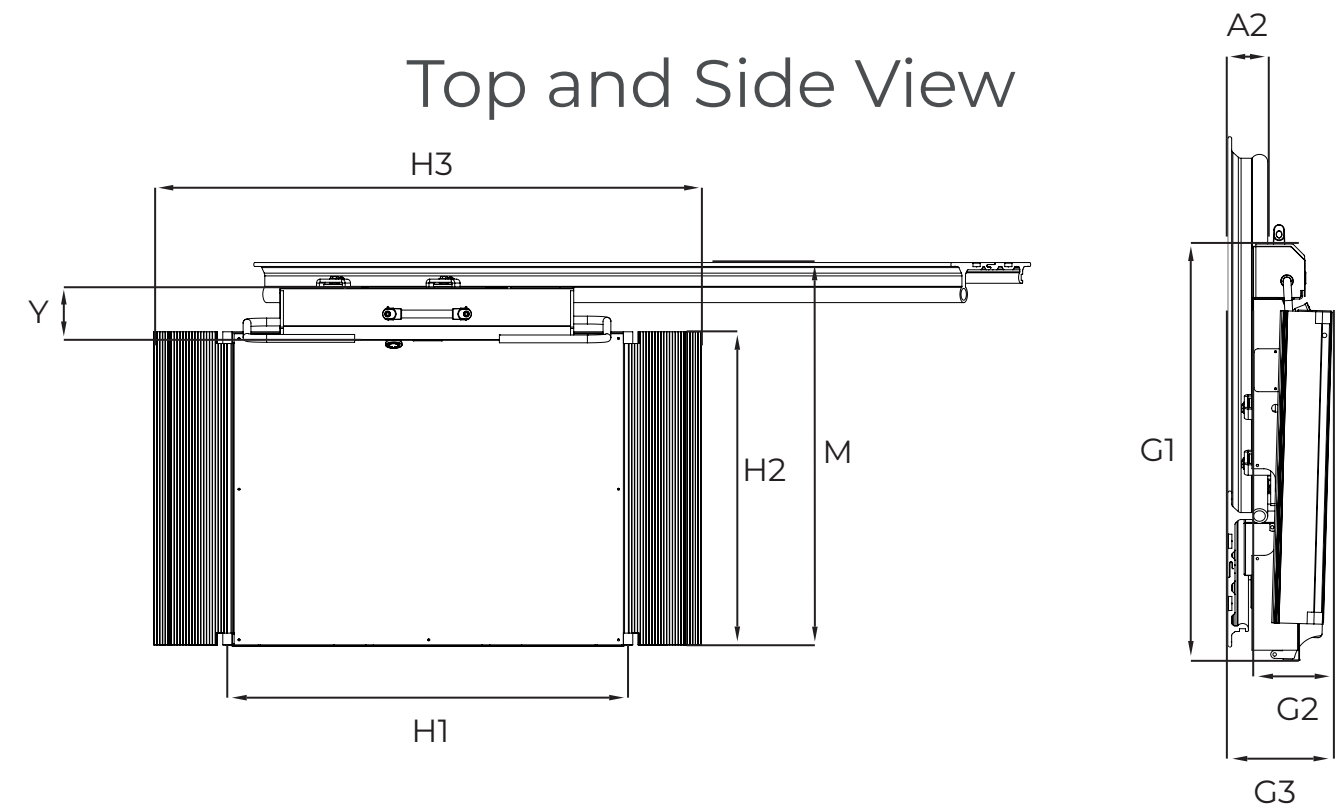


## WALL MOUNTING

Front View



Top and Side View





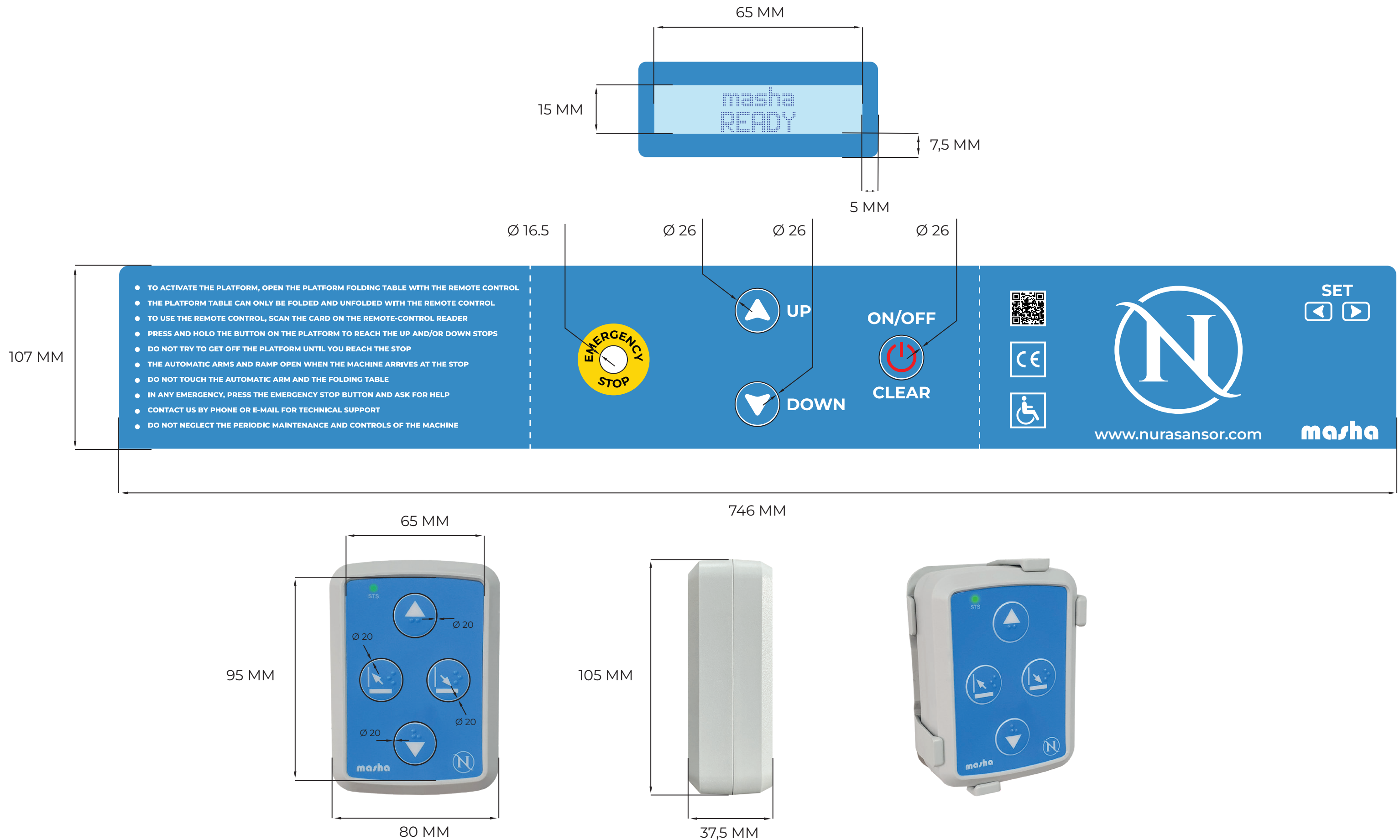
# TECHNICAL SPECIFICATIONS

PARAMETERS	EXPLANATION	FLOOR MOUNTING - VALUES MM	WALL MOUNTING - VALUES MM
A1	Height of the rail	450	450
A2	Width of the rail	101	101
B	Rail diameter	Ø42.4	Ø42.4
C1	Width and length of the rack	15x15	15x15
C2	The length of the rack of the platform (May vary according to staircase dimensions)	2000	2000
D	Rail length of the platform (May vary according to staircase dimensions)	2000	2000
E1	Width of the floor plate of the column	90	90
E2	Depth of the base plate of the column	140	140
F	Machine body width	745	745
G1	Total covered height of the platform (including slats)	1050	1050
G2	Width when the platform is closed	240	240
G3	Width including rails and columns when the platform is closed	340	290
H1	Length of the platform	1000	1000
H2	Width of the platform and length of the entrance and exit ramp	820	820
H3	Distance between two flaps when the platform is fully open	1400	1400
J	Arm length of the machine	860	860
K1	Distance between two arm tips	100	100
K2	Maximum distance between two arms	900	900
K3	Arm Diameter	Ø21	Ø21
M	The width of the platform with all accents on the staircase	1055	1005
TK	Width and length of the load-bearing column	50	50
RK	Distance between rail and rack	324	324
α	Working angle of the platform (Varies according to the hypotenuse of the staircase)	27°	27°
Y	Machine body depth	135	135
Z	Ground clearance of the platform with arms up (including slats)	1790	1790

Engine Power	Speed	Control Voltage	Main Feed	Carrying Capacity	Drive System
0,5 Kw	0,07-0,15 m/sn	24 V DC	220V-50 Hz	300 Kg	Rack and Pinion



# DIGITAL DISPLAY - CONTROL PANEL - REMOTE CONTROL







## DELIVERY THE NEXT DAY

Approved projects delivered in 1 day



## MODULAR SYSTEM

Fast dispatch advantage from stock



## QUICK INSTALLATION

Advantage of fast and effortless installation



## RELIABLE

European standard certificates



## ADJUSTABLE MENU

You can customise and make your own settings



## MODERN DESIGN

Elegant lines and compact construction







## CONTACT US

You can visit our website or contact us directly to get more information about Masha platform lift, technical support and purchase.



+90 (282) 747 61 88



[sales@nurasansor.com](mailto:sales@nurasansor.com)



Veliköy Sanayi Mahallesi 69. Cadde No: 2  
Çerkezköy / Tekirdağ / TURKIYE - 59500